



Yes, you can.®

➤ Invacare® Storm⁴

Simply the best fit

Take centre stage with the revolutionary new *Invacare® Storm⁴* powerchair which has been created to satisfy even the most demanding requirements for configurability, adaptability and functionality. Not only is it stylish and a pleasure to drive, the *Storm⁴* has a unique and fully adjustable seating system that provides quick and easy adjustments for simply the best fit for customer needs. *Storm⁴* has been specifically re-designed and constructed to offer trouble-free servicing and maintenance.



NEW



➤ **Highly configurable**

The new *Invacare*® **Storm**®4 easily adapts to a diverse range of customer requirements thanks to its modular concept. The motor type and speed can be selected according to the customer's primary requirements for either indoor or outdoor use. It offers a wide range of seat types (including the new *Invacare*® Easy-Adapt™ Seat) to support different degrees of posture. **Storm**®4 features independently adjustable seat and backrest widths offering a wide range of configurations. An extra low seat height of 40 cm is now available with the improved telescopic seat lifter giving more accessibility to tables and desks.

➤ **Easy to deal with**

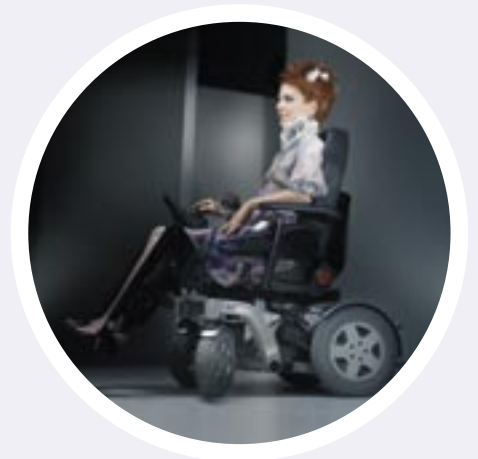
The **Storm**®4 has been developed under the motto "easy to deal with". Seat and back rest widths range from 38 to 53 cm and can be adjusted quickly and easily without any additional parts, and an integrated scale marking shows the selected width. The batteries are extremely simple to remove and electronics are easily accessed for quick, trouble-free servicing.

➤ **Aesthetic design**

The contemporary design of the **Storm**®4 underlines its robust construction and good driving performance, with modern LED lights adding to its elegance. Attractive decals for the front swing and coloured shrouds are available in different shades to suit your taste.

➤ **The Storm tradition**

The first **Storm**® was introduced in 1996 and has since become an industry standard in the outdoor/indoor segment. The new **Storm**®4 continues this tradition, employing the latest technologies. **Storm**®4 offers excellent driving features and a range of cushion types, head and arm rests for a truly personalised configuration. The new ACS II electronics family has been enlarged and provides a comprehensive and cost effective range of controls that can be specifically built to suit customer requirements.



Features



Low seat height

Low seat to floor height of **40 cm** (with seat lifter option): provides more accessibility at tables or when entering /exiting vehicles.



Column lift

The elegant new column lift offers a 25 cm amplitude. Very stable and safe with minimised risk of entrapment.



New driving unit design

Attractive and modern design. Many shades available for shroud and front swing arms. Colours can be easily changed.



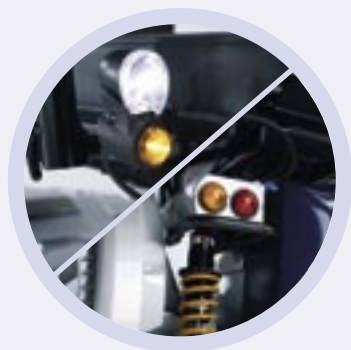
Stable Ride

New design combined with long rear swing arms give a comfortable ride with consistently good traction and stability.



New ACS II electronics

Different controller modules offer a comprehensive and cost effective range of controls that can be specifically built to suit customer requirements.



New LED light system

Attractive design with a strong, bright light for a safe drive.



Easy battery access

Batteries slide out easily for simple servicing. Just open the rear flap and pull the batteries out – it could not be easier!



Easy access to electronics

Easy access to all electronics, cabling and harnesses for quick and trouble free service and maintenance.

Features and Options



Easy-to-adjust seat plate

The width of the *Invacare*® Easy-Adapt™ Seat plate can be easily adjusted from 38 cm to 53 cm without the need for extra parts. The full depth range is covered with only three set of plates.



Easy-to-adjust back rest width

The width of the *Invacare*® Easy-Adapt™ back rest plate can be easily adjusted from 38 to 53 cm. Just one tool is needed for all seat adjustments. Back rest and seat plate are independently adjustable.



Scale on seat

Seat adjustments are clearly visible for ease of selection.



Sliding backrest

This function provides comfort and minimises shearing forces as the backrest moves. The headrest and chin control will also move in line with the customer's head as the backrest moves in different positions.



Prepared for third party seats and backs

The new back rest construction enables easy attachment of third party back rests and customized solutions, whilst still retaining the slide function.



Different seat heights

For models without a seat lifter, 2 different seat heights (45 cm and 48 cm) are available for optimal user fit.



Choice of various *Invacare*® seat cushions

12 different dimensions are available for cushions, with a range of 4 different covers for optimum comfort and style, including *Invacare*® Easy-Adapt™ and Onyx.

Features and Options



Standard Seat

Standard seat with foam cushion, complete with tension-adjustable and angle settable backrest for customised comfort.



Invacare® Easy-Adapt™ seat extra

Adaptable seating with attractive seat fabric to provide day long comfort.



Invacare® Easy-Adapt™ seat with plush cover

Comfortable and breathable fabric that fully supports the customer.



Onyx Seat

The design of Onyx Seat and Backrest Cushion is very attractive. The Onyx cover is weather resistant and easy to clean.



Tilt

Manual or electrical tilt with max. 25 degrees for optimum comfort and posture.



Interchangeable coloured shrouds

The different shroud colours open up a variety of colour combinations!



Coloured decals

A choice of colour decals are available to add the personal touch to the front swing arms



Tie-downs

Four-point tie downs for safe transportation.

Technical data

Standard	38 - 53 cm	35 - 53 cm	48 / 54 cm* ¹	97 cm	10°/0°/7,5°/15°/ 22,5°/30°* ²	25 - 34 / 29 - 38 cm	min. 174 kg* ³
Invacare® Easy-Adapt™	38 - 53 cm	38 - 53 cm	50 cm* ¹	106 cm	-5° - 35°	25 - 34 / 29 - 38 cm	min. 174 kg* ³
Recaro	49 - 53 (36) cm	46 - 51 cm	77 - 83 cm* ¹	97 cm	0° - 45°	25 - 34 / 29 - 38 cm	min. 174 kg* ³
40 - 65 cm* ⁴ 45 / 48 cm fix	29 - 47 cm* ⁵	0° - 25°	63 cm* ⁶ (wheelbase)	87 cm w/o l.r.* ⁷ 110 cm w l.r.* ⁷	49 cm	150 kg	
70 Ah	83 cm w/o legrest 111 cm w/ legrest	6 / 10 cm	8° / 14 %	300 W	6 / 10 km/h	36 km* ⁸	

*1 measured from seat plate

*2 in 6 steps; option: pneum. / electr.

*3 varies with configuration

*4 ground to seat plate, w/o seat cushion

*5 measured from foot plate to seat plate

*6 wheelbase 63 cm

*7 leg rest at largest angle

*8 measurement with a Storm[®], 6 km/h, according to ISO 7176

All measurements have been done under the Invacare®

standard test conditions, unless quoted differently:

User weight: 100 kg, battery: 70 Ah, speed version:

6 km/h, Std. Seat, tilt angle: 4°, seat height: 45 cm, back rest angle 10°

Standard colours



Blue
(RAL 5026)



Black
(RAL 9005)



Champagne colour
(0314)

Colour options



Transparent red
(0200)



White
(RAL 9016)



Olive green
(RAL 6003)

All information quoted is believed to be correct at time of print.
Invacare® reserves the right to alter product specifications without prior consultation.

Further options: any RAL colour, with upcharge and longer lead time.



INVACARE® Limited
South Road · Bridgend Industrial Estate · BRIDGEND CF31 3PY
Tel. +44 (0) 1656 647327 · Fax +44 (0) 1656 649016
E-mail: uk@invacare.com · www.invacare.co.uk
Sales Order E-mail: ordersuk@invacare.com

INVACARE® Ireland Ltd
Unit 5 · Seatown Business Campus
Seatown Road · SWORDS · County Dublin
Tel. (353) 181 070 84 · Fax (353) 181 070 85
Email: Ireland@invacare.com · www.invacare.ie

