



Yes, you can.[®]

➤ **Invacare[®] Action⁴NG**

Where flexibility and stability meets style

Invacare[®] **Action⁴NG** offers a totally flexible range of models to accommodate a wide range of customer needs; all designed for everyday use.

With a newly designed frame for improved stability and comfort, the stylish **Action⁴NG** offers the same cross compatibility of parts with other models in the **Action[®]NG** family allowing customers to easily maintain and update their wheelchairs when required.

NEW





➤ **Move around with ease**

The frame design of **Action^{®4}_{NG}** helps improve stability resulting in easier wheeling and manoeuvring by maximising the customer's position in the chair. It is easy to adapt the **Action^{®4}_{NG}** to other types of wheeling characteristics to suit various needs by changing the rear wheel position and altering the seat position. It features optional seat adjustments to aid postural support for day long use.

➤ **Compatibility with other Invacare[®] wheelchairs**

Almost all parts of the **Action^{®4}_{NG}** frame are interchangeable with other models of the Action family and even with other Invacare[®] wheelchairs, including Rea[®]. All parts such as armrests, legrests, wheels etc, are compatible with each other.

➤ **Easy transport with low weight**

By removing the rear wheels and folding the frame, the **Action^{®4}_{NG}** easily slides in behind the front seat or slips into the boot of a car. Without rear wheels, the **Action^{®4}_{NG}** weighs 8.3 kg. Simple handling and folding makes for great ease of transport.

➤ **The clinical choice**

Even the most basic **Action^{®4}_{NG}** model covers customer needs, as almost everything, from the height of the backrest, armrest and footrest is adjustable. From the **Action^{®4}_{NG}** Tall (125 kg) Transit model for use with an attendant, to the self-propelling model or the groundbreaking Heavy-Duty version with a user weight of 160 kg, the **Action^{®4}_{NG}** offers total flexibility in a chair to suit almost everyone.



Options

NEW



Heavy Duty Version 160 kg

A wider choice of seat widths (55.5 & 60.5 cm), reinforced chassis and a new greater carrying capacity (maximum user weight 160 kg (25 st)).



Backrest bar

With contour-adjustable upholstery a backrest bar is required for extra stability.



Hangers and legrests

Hangers come as angle-adjustable, fixed 80 degrees angle and amputee version. Use depth-adjustable, angle adjustable, fixed and one piece footrest legrests with fixed hanger.



Head support

Can be adjusted on the backbrace. Side and depth adjustment provides optimum positioning.



Optional rear wheel positions

New active position plate offers different handling possibilities for superior driving performance.



Hub brakes

Attendant hub brakes are available to reduce speed.



Anti-tip device

Prevents wheelchair from tipping over and is height adjustable to suit the different seat heights available.

Options



Adjustable backrest upholstery

As an option, the backrest can be equipped with tension-adjustable straps, shaping the backrest to individual needs.



Seat-depth adjustability

Seat upholstery can be adjusted to obtain optimum seat size.

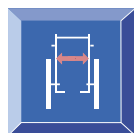


Amputee Legrest

The amputee legrest is both height- and angle- adjustable.

* available January 2010

Technical data



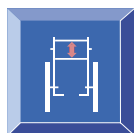
38, 40,5, 43, 45,5,
48, 50,5, 55,5, 60,5 cm



40, 45 and 50 cm



41, 43,5, 46,
48,5, 51 cm



38 - 46 cm
39 - 51 cm*



20 - 23 - 26 cm,
24 cm, 19 - 29,5 cm



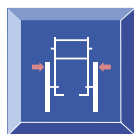
35 - 48 cm



0° - 6°



7°
0° - 30°



Seat width + 21 cm



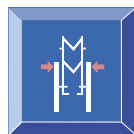
90 - 103 cm



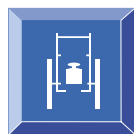
105 - 111 cm



83 - 90 cm



30,5 cm



15,2 kg



Tall - 125 Kg
HD - 160 Kg



Transport:
Weight 8,3 kg



Crash tested
ISO 7176-19**

* Reclining backrest

** Our wheelchairs comply above ISO standards and with ISO 10542, and have additional features providing increased levels of occupant security and safety whilst travelling in a motor vehicle. Wheelchair customers should however transfer to the vehicle seat and use the vehicle installed restraint system whenever it is feasible.

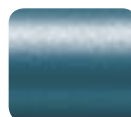
Frame colour



Slate Grey



Ice Brown



Ocean Blue



Anthracite Black

Please note colours may vary slightly from those displayed above.

Upholstery



Black nylon

All information quoted is believed to be correct at time of print. Invacare® reserves the right to alter product specifications without prior consultation.



INVACARE® Limited
South Road · Bridgend Industrial Estate · BRIDGEND CF31 3PY
Tel. +44 (0) 1656 647327 · Fax +44 (0) 1656 649016
E-mail: uk@invacare.com · www.invacare.co.uk
Sales Order E-mail: ordersuk@invacare.com

INVACARE® Ireland Ltd
Unit 5 · Seatown Business Campus
Seatown Road · SWORDS · County Dublin
Tel. +353 1 8107084 · Fax +353 1 8107085
Email: Ireland@invacare.com · www.invacare.ie

